

## EARTHKEEPERS LEVEL III REGISTRATION

July 27-29, 2011

\_\_\_\_\_  
Child's Name Age

\_\_\_\_\_  
Address

\_\_\_\_\_  
City/State/Zip

\_\_\_\_\_  
Day Time Phone Cell Phone

\_\_\_\_\_  
Name of School:

Male (  )      Female (  )

### Parent:

The above named parent or guardian agrees to hold the McKeever Environmental Learning Center harmless for any and all liability arising in connection with this program, except in case of negligence on behalf of the McKeever Center and/or its staff. I affirm that the above named child is covered by insurance for injury or accidents.

\_\_\_\_\_  
Signature of Parent/Guardian Date

\_\_\_ I am a Level II Earthkeeper student, please enroll me as a Level III participant. Cost: \$135.00

\_\_\_ I am interested in being a Guardian Assistant. (Fee Waived).

### Supervision:

Students are supervised at all times by McKeever Center staff and trained college interns, or by parents assisting with the program and providing nighttime supervision.

### Fee:

The EARTHKEEPERS Level III Program is \$135 per student. The fee covers seven meals, lodging, instruction and materials. The fee is payable in full with your registration and is non-refundable for cancellations made within two weeks of the program. Please make checks payable to: McKeever/SRU.

### Deadline:

Completed registration forms and payment must be received by: July 18, 2011. Return to: McKeever Center, 55 McKeever Lane, Sandy Lake, PA 16145

### Parent/Teacher Helpers Needed:

There are a limited number of spaces for parents or teachers to assist with the program. These roles will be as a Guardian Assistants. Guardians are responsible for supervising students in the lodges overnight and during leisure time after supper. If you are interested in being a Guardian Assistant, check the box on the registration form. (The cost for Guardian Assistants is waived).

**NOTE:** All Guardians must the necessary clearances to work with children. A copy of your clearances must be attached with your EARTHKEEPERS LEVEL III REGISTRATION FORM. Upon receipt of your registration: We will send you a confirmation letter, health information form (no medical exam required), what to bring list, and directions to McKeever.

McKeever Environmental Learning Center  
55 McKeever Lane  
Sandy Lake, PA 16145  
724.376.1000  
info@mckeever.org  
www.mckeever.org



## EARTHKEEPERS LEVEL III TRAINING

July 27-29, 2011

McKeever Center  
Sandy Lake, PA

*Dear Level III Earthkeepers,*

*How have you been? We have been very busy preparing for this summer's Earthkeepers Level III Training! I hope that you marked your calendar for this special experience.*

*Finally, all of your preparations and the completion of your Y and S tasks are about to pay off. You are now ready to start a new journey.*

*During the Earthkeepers Level III program, you will participate in experiences unlike any other in your training thus far. Throughout the three days of training you will focus on "Energy and Materials" you use each and every day and how the use affects our Ship of Life, Sections of Life and Styles of Life.*

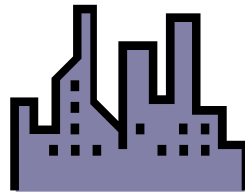
*Be among the Earthkeepers who continue to care for the earth and work towards becoming a master Earthkeeper. We look forward to seeing you this summer!*

*For the earth,*

*E.M.*

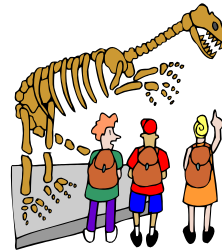
## Here are some highlights of Earthkeepers Level III Training. You'll:

Journey to Solarville where Mario will create a pizza especially for you.



Become a worker at the Cycle Factory and help a tree to grow by operating the cycles of life.

Reconstruct an old museum exhibit using treasures of the past.



Visit the ruins of an old civilization and discover its secret.

Meet Disruptus and Harmonious

Learn about Perceptions and Choices

Use Your Nightwatcher Skills

Swim at nearby Sandy Lake

Find a new magic spot

## Who Can Come to Level II Training?

- ❑ Those who have earned all 4 keys, yellow and blue beads, certificate and Level I & II seals.

## E.M. means . . .

Knowledge \_\_\_\_\_

Experience \_\_\_\_\_

Yourself \_\_\_\_\_

Sharing \_\_\_\_\_